

Explore  
**BHUTAN**  
**WONDERS**

05 NIGHT 06 DAYS

STARTING  
FROM

**INR 26,500/-**  
PER PERSON



# Highlights for Thimphu, Punakha & Paro

## Thimphu

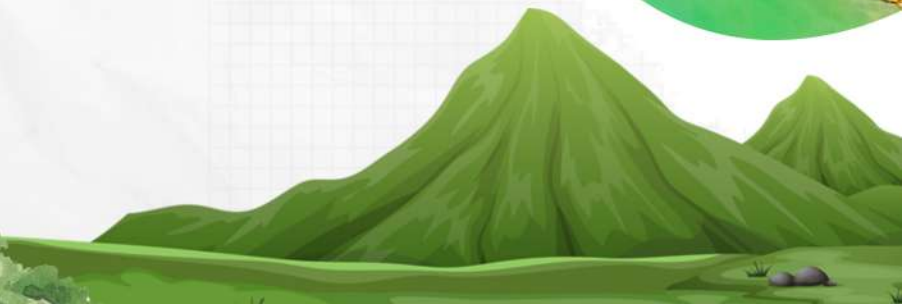
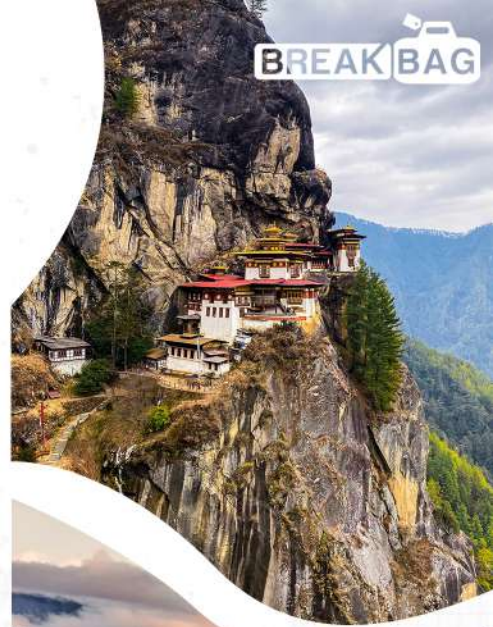
- Explore the iconic Buddha Dordenma, a gigantic statue offering panoramic views of Thimphu Valley.
- Visit Tashichho Dzong, a majestic fortress housing the throne room and offices of the King.

## Punakha

- Magnificent riverside fortress at the confluence of Mo Chhu and Pho Chhu.
- Stunning offbeat stupa offering panoramic valley views.

## Paro

- Hike to Taktsang Monastery (Tiger's Nest), a sacred site perched on a cliff.
- Visit the National Museum of Bhutan in Ta Dzong, showcasing Bhutanese art and history.



# Brief Itinerary



## Day 1 :

Transfer from Paro to Thimphu. En-route visit Chuzom Bridge to view the confluence of Paro and Thimphu rivers.



## Day 2 :



Thimphu Local Sightseeing. Visit National Memorial Chorten, Buddha Dordenma statue, Changangkha Monastery, Royal Takin Preserve, Tashichho Dzong and Folk Heritage Museum.



## Day 3 :



Transfer from Thimphu to Punakha. En-route visit Dochu La, Druk Wangyel Monastery, Chimi Lhakhang, Wangdue Phodrang Dzong and Punakha Dzong.



## Day 4 :



Transfer from Punakha to Paro. En-route visit Tachogang Lhakhang, Ta Dzong and Rinpung Dzong.



## Day 5 :



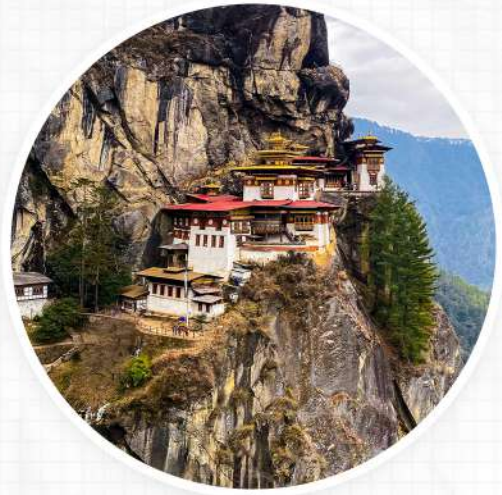
Paro Local Sightseeing. Visit Taktsang Monastery (Tiger's Nest) through beautiful pine forests and National Museum of Bhutan.



## Day 6 :



Departure. Transfer from Paro Hotel to Paro Airport.



# DAY 01



Day 01

## Arrival in Paro. Transfer to **Thimphu**.

- Upon arrival at Paro Airport, meet our representative for your transfer to Thimphu.
- Enjoy a scenic drive through mountain roads, forests, and quaint villages.
- Stop at Chuzom Bridge to see the confluence of Paro and Thimphu rivers.
- Arrive in Thimphu, check in to your hotel, and explore the city or local markets.
- Overnight stay in Thimphu.

# DAY 02



## Full Day – Thimphu Local **Sightseeing.**

- Start the day with breakfast at the hotel.
- Visit the National Memorial Chorten and Buddha Dordenma statue.
- Explore Changangkha Monastery, Royal Takin Preserve, and Tashichho Dzong.
- Conclude with the Folk Heritage Museum to learn about traditional Bhutanese life.
- Overnight stay in Thimphu.

# DAY 03

BREAK BAG

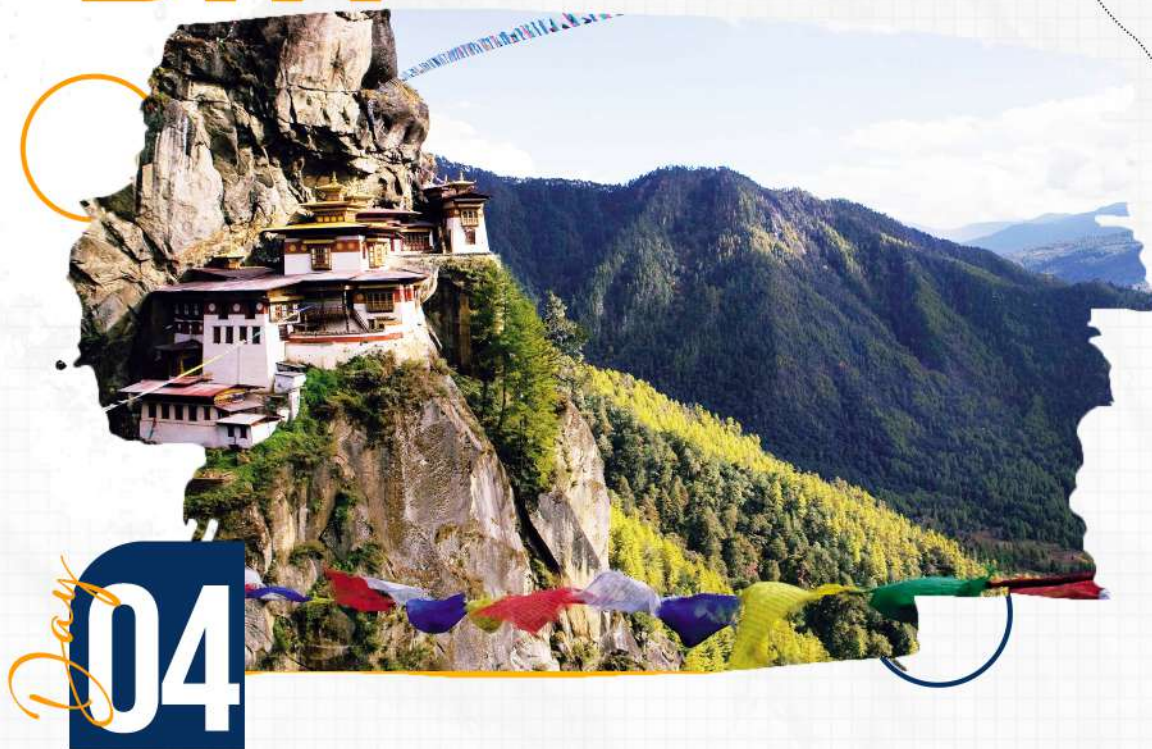


Day  
03

## Thimphu to Punakha. Pass the beautiful **Dochu La**.

- Have breakfast and prepare for your journey to Punakha.
- Stop at Dochu La for Himalayan views and visit Druk Wangyel Monastery.
- Hike to Chimi Lhakhang (temple of fertility) and visit Wangdue Phodrang Dzong.
- Reach Punakha, visit Punakha Dzong, and check into your hotel.
- Overnight stay in Punakha.

# DAY 04



# Day 04

## **Punakha to Paro. Sightseeing in Paro.**

- Enjoy breakfast and board your transfer to Paro.
- Stop at Tachogang Lhakhang and continue to Paro.
- Check into the hotel and visit Ta Dzong and Rinpung Dzong.
- Return to the hotel in Paro.
- Overnight stay in Paro.

# DAY 05



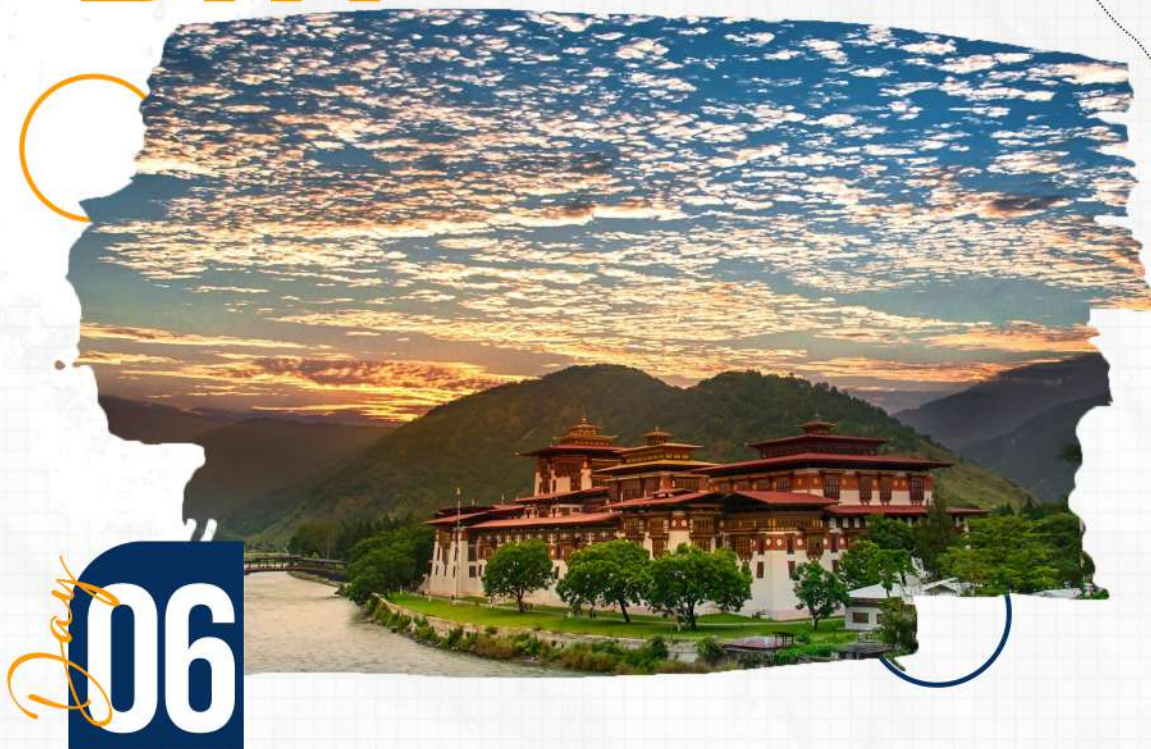
Day  
05

## **Hike to Tiger's Nest. Visit the National Museum of Bhutan.**

- Post breakfast, hike to the famous Taktsang Monastery (Tiger Nest Temple).
- Enjoy the serene hike and explore the monastery.
- Return and visit the National Museum of Bhutan.
- Return to the hotel in Paro.
- Overnight stay in Paro.



# DAY 06



## Departure.

- After breakfast, transfer to Paro International Airport.
- Depart for your onward journey, taking home cherished memories of Bhutan.

# Trip Inclusion



## Stay :

- 02 nights stay at selected hotel option or similar in **Thimphu**.
- 01 nights stay at selected hotel option or similar in **Punakha**.
- 02 nights stay at selected hotel option or similar in **Paro**.



## Meals :

- Daily breakfast, except on Day 1.



## Transfers :

- Airport / Hotel / Airport transfers on Private basis.
- Entry Permit for Bhutan for 6 days, including all Inner Line Permits.



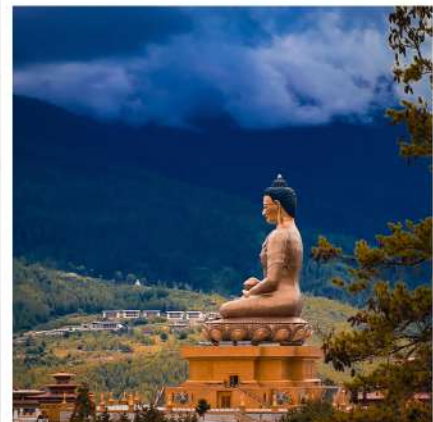
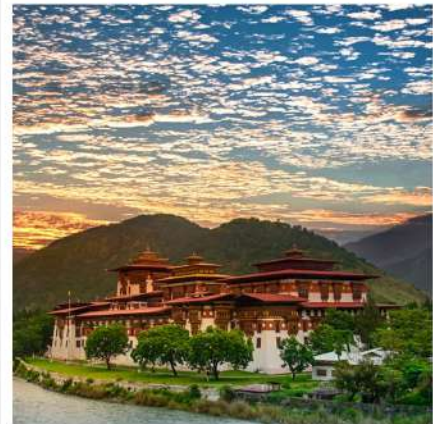
## Support :

- Local English-speaking guide.
- 24 Hrs Customer Services



## Experience Covered :

- Chuzom Bridge
- National Memorial Chorten
- Buddha Dordenma Statue
- Changangkha Monastery
- Royal Takin Preserve
- Tashichho Dzong
- Folk Heritage Museum
- Dochu La
- Druk Wangyel Monastery
- Chimi Lhakhang
- Wangdue Phodrang Dzong
- Punakha Dzong
- Tachogang Lhakhang
- Ta Dzong
- Rinpung Dzong
- Taktsang Monastery
- National Museum of Bhutan



# Trip Exclusions

- Anything not mentioned in Inclusions.
- GST, TCS& All Flight Services.
- Meals not mentioned in the itinerary.
- Expenditure of a personal nature (Camera fee, Tips for guide & Driver & Etc).
- Entrance Tickets and Parking charges.
- Any drink and beverages.
- Cost arises due to any change in tourism policy between Bhutan-India travel and trade policies.
- Cost arises due to change or delay in flight timings.
- SDF (Bhutan Sustainable Development Fees)- 1200/- per night per person.
- The rates are valid for a minimum of 02 adults traveling together at all times.

# Our Reviews

“

Jul 23, 2023

Recently completed a North East tour with BreakBag Holidays, very helpful and responsive behavior from their side. All arrangements were made very nicely. would recommend.



**One Way One Rider**



“

Jun 23, 2023

It was a very good experience, they were very professional in organising the trip and tie ups in foreign country.



**Suhas B.R**



“

Jun 23, 2023

Trip went as planned and as mentioned in the itinerary. Avijit(from breakbag) who planned it for me from starting and was always there for any help. He customised as per my needs.

Hotels stays were pretty good . There were no delays in any pick up or drop . There was a continuous support whatsapp group which I found very useful.



**Abhishek Agarwal**



“

Jul 23, 2023

Had a great experience with break bag., we went to bali and they made the trip super easy. We took transportation Avijit made it look very easy.



**vivek joshi**



“

Aug 9, 2023

Awesome experience.. It was well organised trip.. All the hotels transportation was so nice.. And specially Mr Avijit from breakbag was so helpful Memorable trip. Thank you breakbag....



**vishvajeet patil**



“

Jul 23, 2023

I had an amazing time exploring Vietnam with BreakBag Holidays. They curated a well-planned itinerary that allowed me to discover the country's rich culture, stunning landscapes, and delicious cuisine. Thank you for an unforgettable adventure!!



**Tanmay saha**



Reviews 

4.7 



Reviews 

4.5 

## Costing Trip Calender & Stay Details

### Costing

Double Sharing

₹ 26,500 /-

\*PRICES ARE PER PERSON BASIS\*

Trip Calender : **N/A**

### HOTEL ACCOMMODATION



Bhutan Boutique  
Residency, Thimpu or Similar



White Dragon Hotel,  
Punakha or Similar



Nirvana Inn, Paro  
or Similar

## Note :

- Hotels are Subject to availability and similar hotels would be provided if mentioned hotel are not available.
- You can upgrade your hotel preferences ,we are open to Customization .

# Payment Process

Following mode of payments are available.

## 1. Bank Transfer

Name : BREAKBAG HOLIDAYS PRIVATE LIMITED

Account Number : 2413230364

IFSC Code : KKBK0000326

Account Type : Current

BRANCH : KOLKATA,SALT LAKE

## 2. By UPI

UPI ID : breakbag@ybl

For Cancellation and Terms and Conditions refer [website](#)



Unit No.706, 7th Floor, Amp Vaisaakkhi Mall, Premises No.112, AG  
Block, Sector II, Bidhannagar, Kolkata, West Bengal 700091



[www.breakbag.com](http://www.breakbag.com)



+ 91 76990 02674 | 98003 16630



# important Information

- International Check-In 14:00 hrs & Check-Out 12:00 hrs
- Domestic Hotel Policies: Check-In and Check-Out timings as per hotel policies and varies state to state example Andaman: Check-In at 10:00 AM, Check-Out at 08:30 AM whereas other cities like North East : Check-In at 14:00 hrs, Check-Out at 11:00 AM
- Early Check In,Late Check Out & Special Request can never be guaranteed and depends on Hotel Discretion and can be chargeable
- During the Check In,Hotels may charge you refundable Security Deposit that will be returned during Check Out if there are No Damages or Consumption of any food or drinks from Mini bar .
- **In case of Join or Shared Tours**
- Please wait at the hotel lobby or mentioned location 5 minutes before the pick time as in case if a tour is missed cannot be re-arranged.
- Private Transfers (Airport) : Private Transfers are on point to point basis and any Special Request like "**Stops or Tour Extension**" with the driver or On Ground Team will be chargeable
- Pick up sometimes will be delayed mainly in Thailand & Vietnam due to Traffic and that can be upto 30 min which is unavoidable . However we request you to be ON TIME waiting at the lobby as if the driver doesn't find the guest at lobby will leave and it cannot be rearranged under any circumstances.
- In case if you are vegetarian please inform Guide or Representative during Tour and Note : Veg options are limited.
- No Boarding without Valid ID: Boarding will not be allowed without a valid government ID ie Adhar Card,Voter Id Card in case of travel within India and for International travel The Traveller/Traveler must have his/her passport valid for at least 6 months subsequent to such departure
- To avoid any escalation we have shared the names of the hotel and it is guest responsibility to check hotel details online, we shall not encourage any escalation on ground related to hotels. The hotels have good reviews and are considered as decent hotels as per the budget and inclusions shared by guest
- Additional accommodation/food costs incurred due to any delayed travel is not included in the package.

# Terms & Conditions

## Payment & Cancellation :

- Full Payment : The entire trip cost must be settled before the trip starts.
- Pending Payments: Failure to complete payments may lead to trip cancellation
- Non-Refundable Booking Amount: If the guest cancels the trip, the booking amount is non-refundable. This booking amount is determined by calculating the initial costs incurred, covering non-refundable expenses such as non refundable hotels, ferry tickets, and advance payments to various suppliers.
- Cancellations within 30 days of the trip start result in a 100% fee. Between 45 and 30 days, it's a 50% fee. 60 to 45 days, a 25% fee.

## Refund Policy :

- No Refunds: Refunds will not be made for any inclusion(s) not availed by the client.
- Luggage Responsibility: Travelers must take care of their luggage and belongings
- Management Liability: The management is not responsible for any damage or missing items during the tour.
- In situations involving government orders, adverse weather conditions, ferry cancellation, protests, landslides, or any unforeseen events, we diligently devise alternative plans or trips. Although certain activities may be cancelled, the organization strives to provide the best alternatives without issuing refunds.
- If a trip is prematurely terminated due to natural calamities or unforeseen circumstances (such as rain, high tide leading to ferry cancellation, earthquakes, landslides, strikes, etc.), no refunds will be issued.
- Customers are responsible for any additional expenses arising from natural calamities or unforeseen circumstances (e.g., rain, earthquakes, landslides, high tides, ferry cancellation etc.). The company holds no liability in such cases. The customer has to make own arrangements for hotels, transfers and other services.
- TCS and GST charges are non-refundable
- Non-Transferable Bookings: The transfer of bookings is strictly prohibited.



# Terms & Conditions

## AC Usage :

- AC Off in Hills: Air conditioning will be switched off in the hills
- Driver's Discretion: The driver may put off the AC for safety and ease of travel along uneven and dangerous routes.

## Departure Protocol :

- Fixed Departure Time: The time of departure is stated and fixed.
- Status Update: Travelers must update their status with the Trip coordinator(s).
- Reporting Time: Report at the pickup point 30 mins prior to the scheduled departure.
- Pick Up & Drop Point will be only Airport only.No other pick up and drop off point will be acknowledged

## Health & Safety :

- Drinking & Smoking Prohibited: Strict prohibition on drinking and smoking for health and safety.
- Physically Demanding Activities: Tours involve physically demanding activities; participants are recommended to be in good shape.

## Liability Disclaimer :

- BreakBag is a modern travel community, that organizes and arranges the adventure trip to the mountains which has the risk of accidents, loss of life, bodily injury, financial repercussions, etc. Neither the BreakBag nor its agents or affiliated entities shall be responsible or liable for any accident, bodily injury, illness or death, loss, or damage to baggage or property, or for any damages or claims whatsoever arising from loss (including loss of possessions and loss of enjoyment), negligence or delay from the act, error, omission default, or negligence of any person, not its direct employee or under its exclusive control.

# Terms & Conditions

## Conduct Guidelines :

- Misconduct Intolerance: No act of misconduct or indiscipline tolerated.
- BreakBag's Right: BreakBag reserves the right to take appropriate action, including removal from the tour at the traveler's expense.

## Delays & Alterations :

- BreakBag's Responsibility: BreakBag shall not be responsible for delays or alterations in the program.
- Indirect Expenses: Indirectly incurred expenses due to natural hazards, accidents, weather conditions, ferry cancellation etc., are not the responsibility of BreakBag.
- Injury/Illness and Evacuation : Injury/Illness and Ev• Participant's Health: In case of injury/illness, external evacuation/transport services may be engaged
- Additional Cost: Any additional cost arising must be borne by the concerned participant/participant's family.

## Insurance Policy :

- BreakBag does not provide any insurance policy to cover sickness, accidents, or losses due to theft or other reasons.

## Legal Jurisdiction Clause :

- In the event of any disputes arising, they shall be exclusively subject to the jurisdiction of the courts at Kolkata or Durgapur (West Bengal, India).

## Meal Stops & Itinerary Changes :

- Predefined Stops: Lunch/Dinner stops at predefined places chosen by the Trip Captain or Driver.
- Itinerary Alterations: Numerous factors may bring alterations in the itinerary like drivers recommendation ,road closure, and BreakBag reserves the right to make necessary changes in the schedule.

# Terms & Conditions

---

## Accommodation Details :

- Accommodations or Similar Accommodations, Room Categories, Special Requests: In most places of North East, you will find basic hotels or homestay because they are in remote areas. So, don't expect things like 24/7 electricity, hot water, or Wi-Fi in these places.
- The tour packages are based on standard rooms. If you're travelling with a big group, we might not have enough rooms in one hotel. So, if we need to book two or more hotels, the rooms may not be exactly the same.
- We'll try our best to make them similar, but please be understanding. Any special requests, like early check-in or room preferences, depend on what's available when you arrive. If there are extra charges, you'll have to cover them.

## Triple Sharing Rooms :

- Extra Mattress: In triple-sharing rooms, an extra mattress is provided, not a full extra bed.

# Important Information Before Travelling to Bhutan

1. **ChimiLakhang Temple:** This temple features explicit sexual depictions. If you have children and prefer not to expose them to such imagery, you might want to skip this site.

2. **Departure Time:** The last pick-up for Phuntsholing departs around 12 PM. Ensure your flight arrival time aligns with this schedule.

3. **Itinerary Modifications:** Itineraries may change due to weather, road conditions, and participants' physical capabilities. We reserve the right to adjust schedules for safety, comfort, and overall wellbeing.

4. **Essential Documents:** Bring a valid Government ID Card, preferably a passport with at least six months' validity from the departure date from India. Also, carry your Covid vaccination certificate.

## 5. Travel Essentials and Gear:

- Bags: A rucksack and a day pack.
- Water: 3-liter water bladder or bottle.
- Clothing: Sun hat, woolen cap, UV-protected sunglasses, long and short sleeve t-shirts, fleece jacket, pants, shorts, undergarments, socks, small towel, and a rain jacket or poncho.

## 6. Footwear and Personal Items:

- Shoes: Sport shoes or sneakers, and flip flops or sandals.
- Medicines: Glucose powder, headache, diarrhea, motion sickness, and altitude sickness medications, Dettol, bandages, and cotton.
- Personal Care: Toothpaste, toothbrush, paper soap or sanitizer, sunscreen (minimum SPF 40), lip balm, cold cream, body spray, and an LED torch light.

7. **Sustainable Development Fee (SDF):** The SDF of 1200 per person per day is not included in our packages unless specified. Guests should pay this fee directly at Immigration. A passport is mandatory if traveling by flight, and a Voter ID is required if traveling by road.

For detailed **Terms and Conditions**  
please refer to our website

[www.breakbag.com](http://www.breakbag.com)